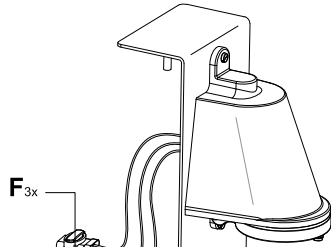
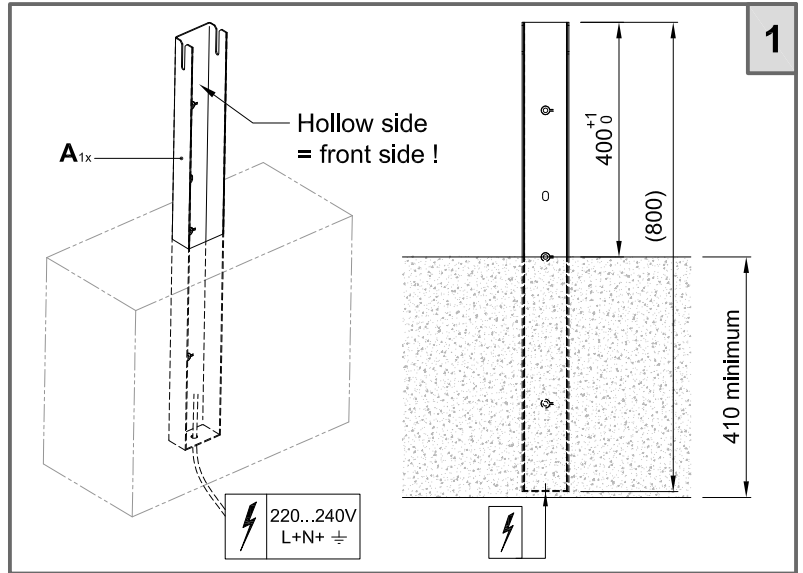
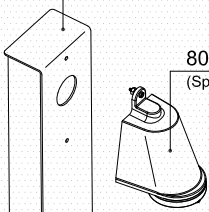


850.24.172
(Wilford)

800.24.94x
(Spreaderlight)

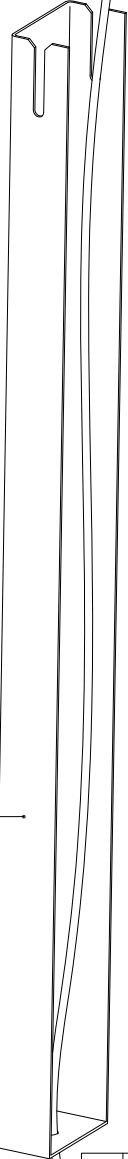


D2x

B1x

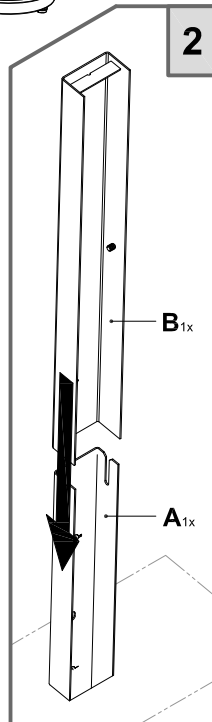
E1x

A1x



F3x

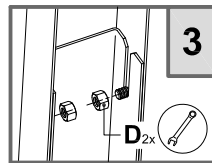
C1x



2

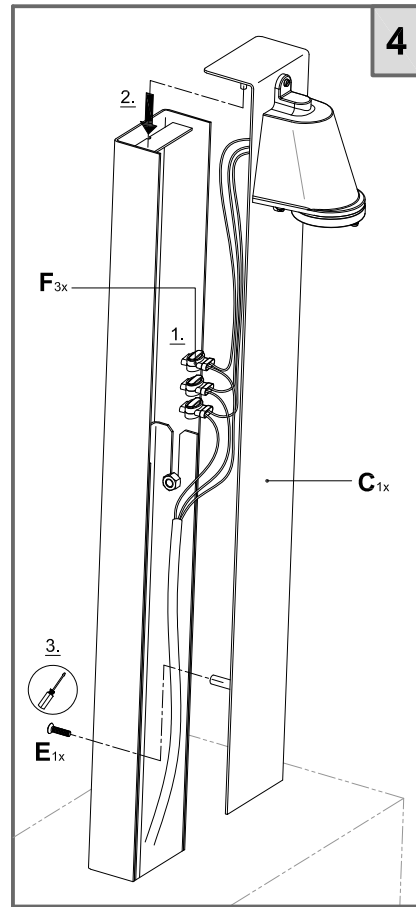
B1x

A1x



3

D2x



4

F3x

2.

1.

C1x

3.

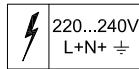
E1x

INFO

F



3x



Ⓜ Veiligheidsvoorschriften

Schakel de netspanning uit - om veiligheidsredenen - vooraleer u de WILFORD & SPREADERLIGHT LED installeert.

ⓕ Instructions de sécurité

En cas d'entretien et réglage de la lampe WILFORD & SPREADERLIGHT LED couper la tension.

Ⓢ Safety instructions

In case of maintenance and adjustment of the lamp WILFORD & SPREADERLIGHT LED switch off the power

ⓐ Sicherheitsanleitung

Für die Wartung der Leuchtmittel WILFORD & SPREADERLIGHT LED die Spannung abschalten.

ⓔ Instrucciones de seguridad

En caso de manutención y regulacion de la lámpara WILFORD & SPREADERLIGHT LED sacar la tensión.

Ⓛ Istruzioni di sicurezza

In caso di manutenzione e regolazione lampadna WILFORD & SPREADERLIGHT LED togliere tensione.