



GIOBAGNARA

CARE & MAINTENANCE TIPS

Leather's charm is due to its shifts in nuances, varying textures, in-built freshness and natural subtle changes which make every piece unique. When handling such a versatile material, its appearance will be shaped by the choices in taking care of it. GIOBAGNARA has been constantly looking, for more than twenty years, for solutions to create technical finishes able to grant leather with stunning properties, such as unrivalled resistance and durability. However, it is essential to keep in mind a few tips in order to preserve your goods' appeal for years to come.

DO

- Do regularly clean leather with a soft brush or cloth;
- Do blot away water or moisture as soon as possible;
- Do dry wet leather naturally, away from artificial heat;
- Do clean spots and stains with a mixture of soap flakes and warm water.

DO NOT

- Do not machine wash leather;
- Do not immerse leather in water to clean;
- Do not get leather wet wherever possible;
- Do not dry wet leather next to a radiator or with a hair dryer;
- Do not leave leather in excessively wet, dry, cold or hot places for a long period of time.

CALFSKIN

To polish leather, we recommend to clean it gently with a soft cloth dampened with warm water or a small brush and, if necessary, with mild soap. Lighter tones are more susceptible to noticeable spots and tears, so cleaning is essential to maintain a pristine finish. It is important to avoid using abrasive cleaning methods and alcohol-based detergents, especially for leathers with a smooth finish.

SUEDE

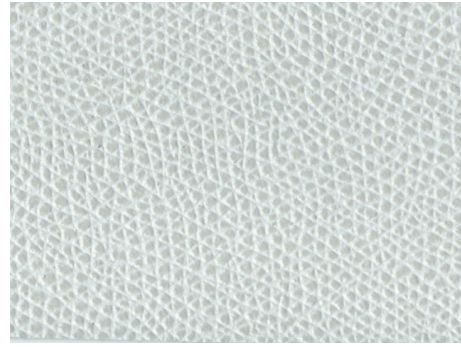
When handling suede, dry cleaning methods are advisable: this finish requires the use of a brush or a special rubber for suede cleaning. Wet conditions should be avoided and water should not be used during the cleaning process; accidental spills can be blotted away with a clean, dry cloth. Be sure not vigorously rub the surface.

PONY & SHEARLING

It is recommended to clean gently with a small brush or a soft cloth dampened with warm water (in this case, it is important to remember to let it dry naturally).

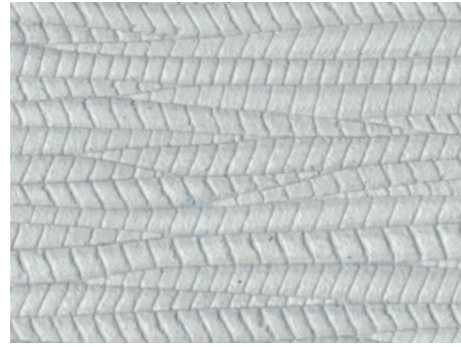
EXOTIC LEATHER

When cleaning exotic leathers such as real shagreen and crocodile, always be sure to work with the grain. While standard cleaning methods such as soap and water and specialised leather cleaning solutions can be applied, it's important to thoroughly remove any product build up from grooves and crevices after cleaning. This can be achieved by gently buffing your products with a soft brush.



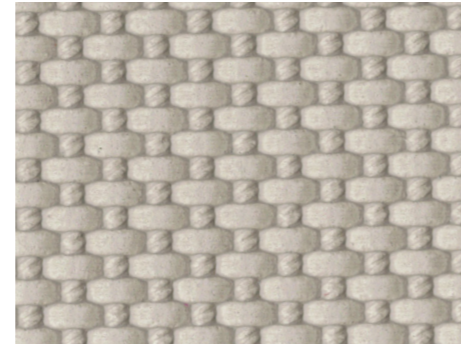
PRINTED CALFSKIN GOLF
62 colours available
price category: A
origin: Northern Europe
emboss/deboss customization available

waterproof ●●●●● *scratchproof* ●●●●●



PRINTED CALFSKIN PANAMA
22 colours available
price category: B
origin: Northern Europe
emboss/deboss customization not available

waterproof ●●●●● *scratchproof* ●●●●●



PRINTED CALFSKIN BELLAGIO
34 colours available
price category: B
origin: Northern Europe
emboss/deboss customization not available

waterproof ●●●●● *scratchproof* ●●●●●



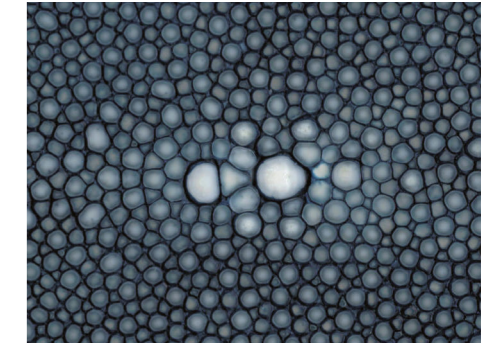
CALFSKIN SUEDE
35 colours available
price category: A
origin: Northern Europe
emboss/deboss customization available

waterproof ●●●●● *scratchproof* ●●●●●



SHEARLING
4 colours available
price category: SHEARLING
origin: Italy
emboss/deboss customization not available

waterproof ●●●●● *scratchproof* ●●●●●



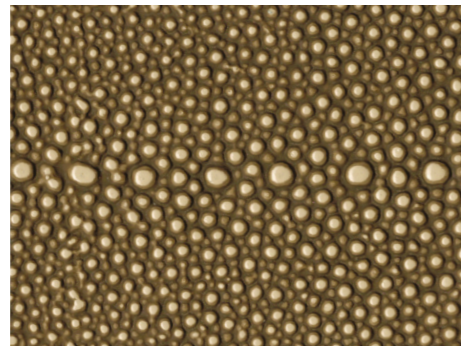
REAL SHAGREEN LEATHER
15 colours available
price category: D
origin: Southeast Asia
emboss/deboss customization not available

waterproof ●●●●● *scratchproof* ●●●●●



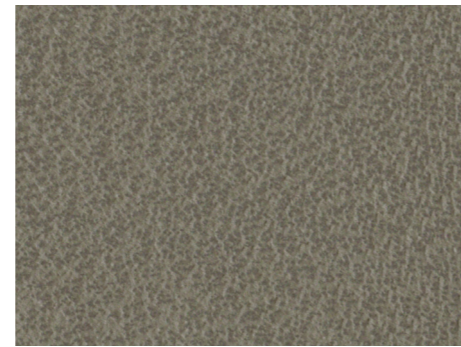
PRINTED CALFSKIN CROCODILE
17 colours available
price category: A
origin: Northern Europe
emboss/deboss customization available

waterproof ●●●●● *scratchproof* ●●●●●



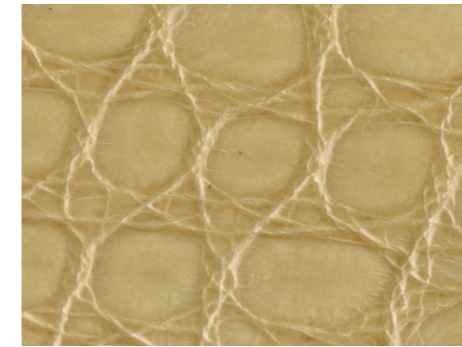
PRINTED CALFSKIN SHAGREEN
10 colours available
price category: B
origin: Northern Europe
emboss/deboss customization not available

waterproof ●●●●● *scratchproof* ●●●●●



PRINTED CALFSKIN WILD BOAR
21 colours available
price category: A
origin: Northern Europe
emboss/deboss customization available

waterproof ●●●●● *scratchproof* ●●●●●



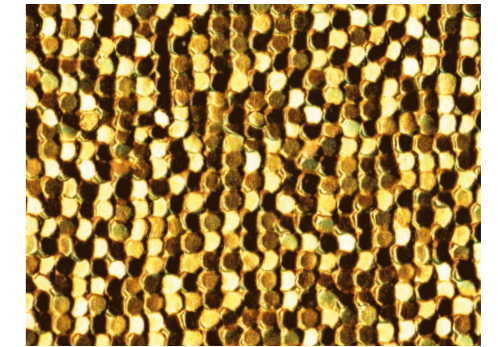
REAL CROCODILE LEATHER
13 colours available
price category: D
origin: South America
emboss/deboss customization not available

waterproof ●●●●● *scratchproof* ●●●●●



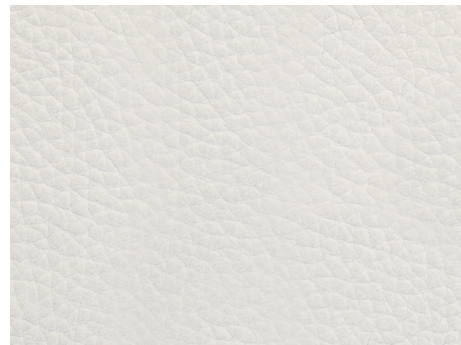
SILK-SCREEN PRINTED CALFSKIN PONYLUX
1 colour available
price category: C
origin: Northern Europe
emboss/deboss customization not available

waterproof ●●●●● *scratchproof* ●●●●●



PRINTED CALFSKIN LAMIGOLD
1 colour available
price category: C
origin: Northern Europe
emboss/deboss customization not available

waterproof ●●●●● *scratchproof* ●●●●●



PRINTED CALFSKIN DEER
7 colours available
price category: A
origin: Northern Europe
emboss/deboss customization available

waterproof ●●●●● *scratchproof* ●●●●●



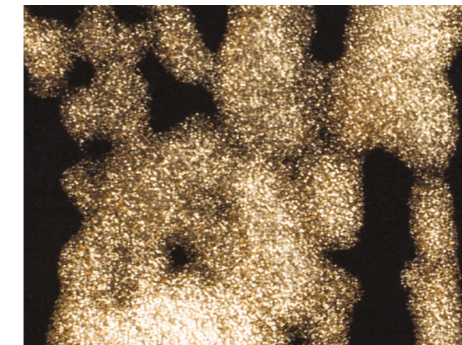
CALFSKIN NAPPA
36 colours available
price category: A
origin: Northern Europe
emboss/deboss customization available

waterproof ●●●●● *scratchproof* ●●●●●



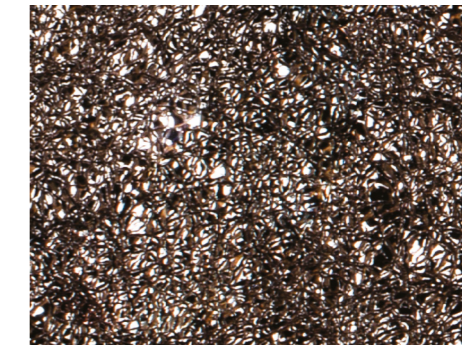
CALFSKIN PONY
18 colours available
price category: B
origin: Northern Europe
emboss/deboss customization not available

waterproof ●●●●● *scratchproof* ●●●●●



PRINTED CALFSKIN CLOUDS
1 colour available
price category: C
origin: Northern Europe
emboss/deboss customization not available

waterproof ●●●●● *scratchproof* ●●●●●



PRINTED CALFSKIN FROST
1 colour available
price category: C
origin: Northern Europe
emboss/deboss customization not available

waterproof ●●●●● *scratchproof* ●●●●●

| WATERPROOF | |
|--------------|---------------------------|
| ●●●●● | <i>no waterproof</i> |
| ●●●●● | <i>slightly resistant</i> |
| ●●●●● | <i>resistant</i> |
| ●●●●● | <i>waterproof</i> |
| SCRATCHPROOF | |
| ●●●●● | <i>no scratchproof</i> |
| ●●●●● | <i>slightly resistant</i> |
| ●●●●● | <i>resistant</i> |
| ●●●●● | <i>scratchproof</i> |